



Tire Recycling News

Quarterly Report from CM Sarasota Operations

Winter Edition 2010 Volume III

The Revolution Continues

CM is Proud to Introduce its New Zero Waste Processing System

This new system is capable of processing 4-6 inch shred into wire free TDF, mulch, coarse rubber and/or crumb rubber feed stock along with exceptional clean tire wire in one complete system.

The system is also capable of cleaning and separating rubber and steel from processes that generates otherwise unusable, contaminated material. Commingled rubber and steel from TDF or crumb rubber systems can easily be processed and separated recovering valuable rubber and steel fragments eliminating disposal costs and creating additional revenue streams.

The wire produced from this system is exceptionally clean and free of rubber particles and has less than 3% contaminants by weight.

At the heart of the system is the CM Liberator. Depending on capacity a **CM2R** or **4R Liberator** can be used. The system is extremely robust and low maintenance.

Seeing is Believing

The new CM Zero Waste system is on display and is fully operational at CM's manufacturing facility in Sarasota, Florida and you are invited to see the system in operation.

CM is conveniently located to both Sarasota or Tampa airport and we have a corporate agreement with Marriott Hotels also located close to CM, downtown Sarasota and our outstanding beaches, golf and other amenities!

Visit our Marriott web portal to book your hotel here: [Marriott Hotels](#)

Sarasota Airport is serviced by: Delta, Jet Blue, US Airways, Air Canada, Air France, Alitalia and KLM and Tampa International has many additional airlines partners and is located just one hour north of Sarasota.

[Sarasota Bradenton International Airport \(SRQ\)](#)

[Tampa International Airport \(TPA\)](#)

Call or e-mail us today to schedule your time to visit and be on site at the CM facility for this exciting demonstration of our latest tire processing system. This demo is for limited times so, don't delay in making your travel plans. The last day to see the demonstration is January 21, 2011.

Contact: [Kaytee Moran](#) or call +1 (941) 755-2621 Ext. 29.

We look forward to seeing you!



Free samples for all visitors!

Tyre Disposal Ltd. and CM Bring First Tire Recycling Program to New Zealand

Kiwi Farmer Stays the Course to Clean Up Tire Piles in New Zealand



Although geographically small, the islands that make up the country of New Zealand discard as many as four million tires each year. Until now those tires have been discarded all over the countryside, tossed away onto farms, piled up as silos, or dumped along roadways and other rural properties creating serious fire hazards and mosquito and rodent infestations - a major liability and intense eyesore on the landscape.

New Zealand's Ministry of the Environment along with the countries two major tire manufacturers; Dunlop and Bridgestone have talked about this mounting problem for many years, but none have ever taken responsibility for the collection and proper disposal of end-of-life tires. Enter Owen Douglas, a Kiwi cattle farmer and entrepreneur who came onto the scene like an environmental white knight back in the late 1990's.

Over the years his cattle and sheep farms had been among the dumping sites with mountains of tires that had accumulated. Mr. Douglas spent several years tirelessly doing vast amounts of research, attending educational seminars and traveling the globe to learn everything he could about waste tire processing. In the end, he concluded that the best way to rid his country of all the tire piles and all future tire disposal was to shred the tires for TDF.

Mr. Douglas set up his new venture as Tyre Disposal, Ltd. and made his first pitch to introduce the idea locally to the NZ Dairy Co. to process the tires at its coal fired facility. Sadly, the project never got off the ground due to corporate restructuring. Brushing off this first hurdle he spent the next six years meeting with many power plants, cement companies and paper mills in NZ but was sidelined by indifference among the principals to accept TDF as a fuel source and by NZ environmental officers who decided that burning TDF "was not a good idea."

During this time Mr. Douglas had been having conver-

sations with the team at CM including Mike Playdon now retired and the father of one of CM's Field Technicians, Josh Playdon and CM Sales Mgr. Rick Colyar. They chose to investigate other options for potential markets for Owen and contacted Chris Aum, Sales Manager for e & Resources of Korea and CM Sales Representative for Asia. Chris was able to arrange for Owen to meet with the group at Asia Cement, located just outside of Seoul to discuss the opportunity. Earlier this year the meeting took place and in less than fifteen minutes Asia Cement eagerly agreed to take as much TDF as Tyre Disposal could produce and ship. With this agreement now in place Owen placed the order with CM for a Dual Speed Shredder, a stage one processing system specifically designed to produce clean cut 2" chips ideal for TDF. The system is now in transit for early January delivery to Tauranga with the plan to ship 1,000, 20' containers of 2" tire chips (20,000 m/tons) to Korea annually.

Mr. Douglas has set up his facility at an old dairy company close to the railway at the Waharoa Industrial Park in Tauranga. He plans to supply lockable containers to any site with a stockpile of old tires, even for one-off cleanups, and will charge per tire. Targeted clients include; quarry and mining operations, contractors, tire retailers and council transfer stations. The tipping fees are based on the size of the tire. Passenger tires will be charged \$6 with larger tires up to 50kg at \$30, and mining tires weighting up to a ton cost will be charged \$250 to be collected. Tyre Disposal has already begun collecting tires, which are temporarily stored in an old quarry close by and ready for processing.

Owen, now in his 70's has fought long and hard to win this for New Zealand. Over the next several years we will see a dramatic change in the rural landscape along with stronger initiatives for environmental sustainability and a higher level of accountability from the NZ government and tire industry because of his efforts over the past decade.

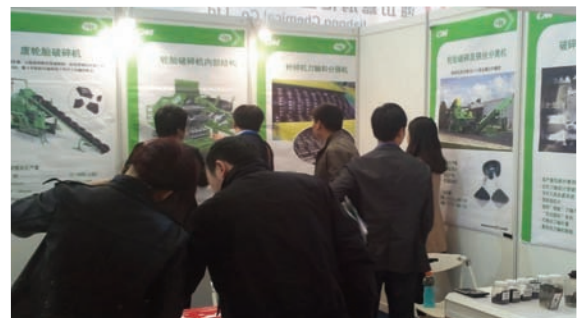
Whoever said that "perseverance pays" – must know Owen Douglas!

CM Trade Show News

CM-Asia Exhibits at Reifen China, Shanghai New International Exhibition Centre



Jack Um, General Manager of e & Resources, Korea and Associate Alex Jung are the CM Sales Representatives for all of Asia.



Thousands of attendees from China, Japan, Korea and Malaysia attended the show.

CM-Europe Exhibited in Italy at Ecomondo at the Rimini Expo Centre



CM display booth during set up at Ecomondo



CM-North America Attends Shows in Ontario, Canada and Little Rock, Arkansas - October & November 2010



Toronto, Ontario played host for this years Rubber Recycling Expo. Above, various photos of the show and unique exhibits along with outstanding views of the city both on foot and from the top of the CN Tower.



Little Rock and the historic Peabody Hotel hosted the 4th Annual Scrap to Profit Conference in November.

A view of the Arkansas River from the balcony of the Peabody Hotel.



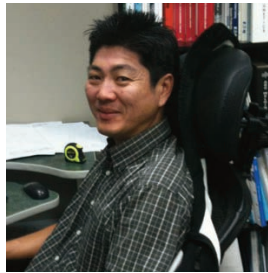
CM-Sarasota Operations - Birthdays Anniversaries and Special Events

Birthdays

George LaGrange	Jan. 10th
Bob Weng	Jan. 18th
Randy Qualls	Jan. 27th
Steven Gasper	Jan. 29th

Anniversaries

David Malozi	Jan. 4th	1 year
Kaytee Moran	Jan. 25th	1 year
Randy Qualls	Jan. 26th	4 years



CM Welcomes Jared Teng as New Senior Mechanical Engineer

Jared joined CM in October of this year as the newest member of the CM Engineering Dept. Jared is a native of Malaysia who as a child moved and attended school in Singapore. After graduating, he was accepted to the University of Victoria in British Columbia and received his degree as a P.E. in Mechanical Engineering.

His first job after college was with a division of the Ford Motor Co. and relocated to Sau Paulo, Brazil where he remained for three years. He was offered a position with Nicholson Manufacturing back in Victoria where he remained for the past five years until being swayed to come to the US where he worked briefly for an environmental group in Boca Raton, FL before joining CM. He currently lives in Lakewood Ranch with his wife Palma and 8 year old daughter Sophia.



It's a Girl!

Engineering Manager, Joshua Spalding and wife Melanie became the proud parents to Maleah Gabriela Spalding born Nov. 30, 2010 at 7lbs. 11oz.



*Wishing You
a Joyous
and Prosperous
New Year*

